



GAT MONTHLY MEMBERSHIP PROGRESS REPORT

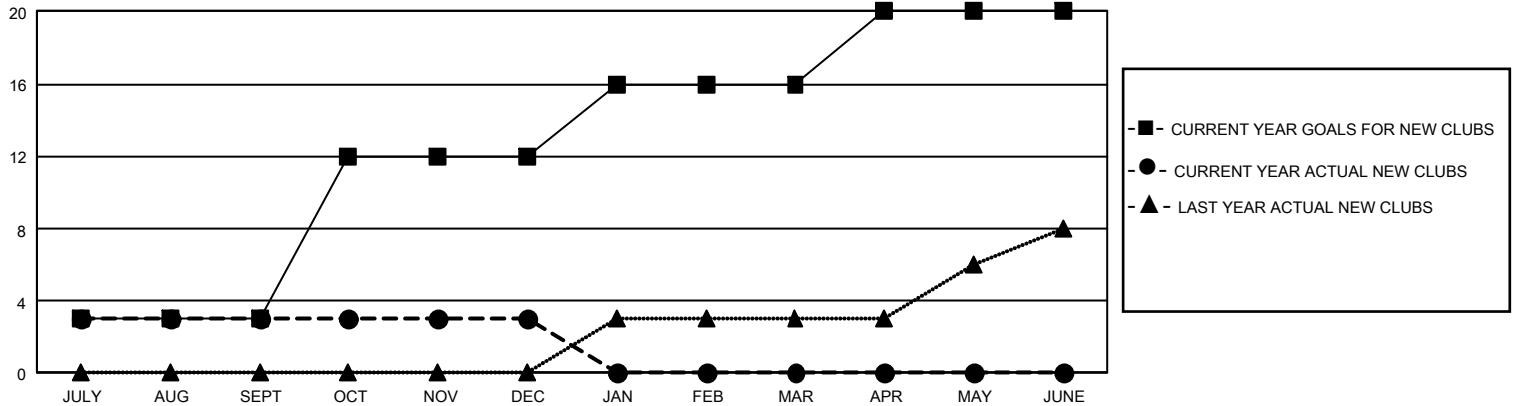
Results as of: 12/31/2025

GMT Constitutional Area 2, Group B

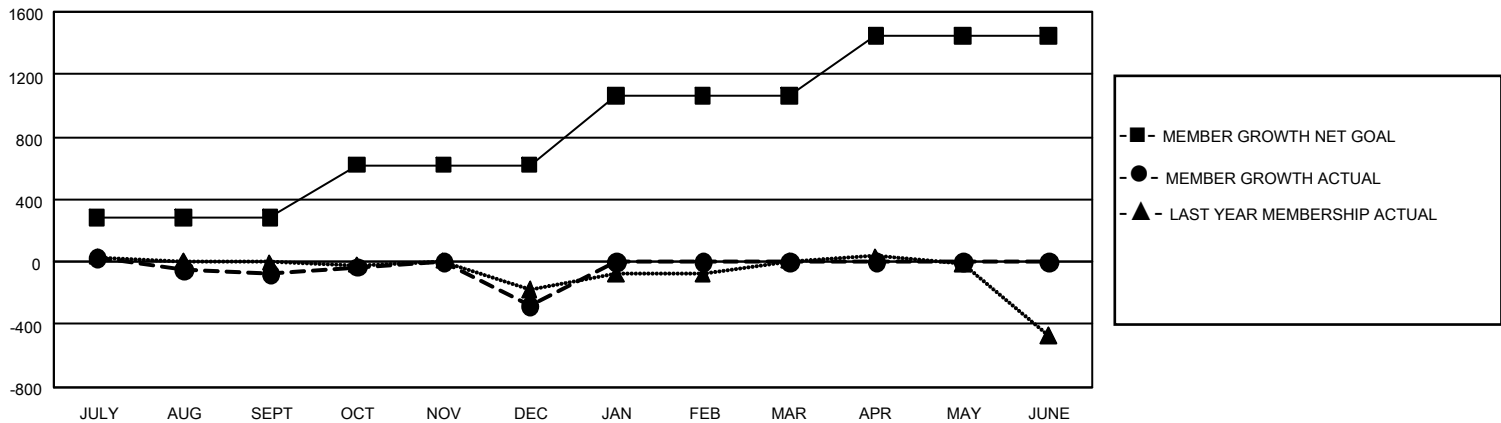
REPORT DOES NOT INCLUDE CLUBS IN UNDISTRICTED AREAS.

Clubs				Members			
RESULTS FOR 2025-2026				RESULTS FOR 2025-2026			
QUARTER	NEW CLUB GOAL	NEW CLUBS	DROPPED CLUBS	QUARTER	MEMBER GROWTH NET GOAL	MEMBER GROWTH ACTUAL	DROPPED MEMBERS ACTUAL (including transfers)
JULY/AUG/SEPT	9	3	2	JULY/AUG/SEPT	281	466	449
OCT/NOV/DEC	27	0	12	OCT/NOV/DEC	339	626	726
JAN/FEB/MAR	12	0	0	JAN/FEB/MAR	441	0	0
APR/MAY/JUNE	12	0	0	APR/MAY/JUNE	385	0	0

GOALS AND ACTUAL NEW CLUBS CUMULATIVE



GOALS AND ACTUAL MEMBERS CUMULATIVE



DROPPED CLUBS: 14

310 CLUBS OF 675 ADDED 1 OR MORE NEW MEMBERS

GENDER DISTRIBUTION

MALE	9,369 (60.47%)
FEMALE	6,116 (39.47%)
NON BINARY	2 (0.01%)
PREFER NOT TO ANSWER	7 (0.05%)

DROPPED MEMBERS

DECEASED	124
CLUB CANCELLED	127
OTHER	916
TOTAL	1,167

[CLICK HERE FOR CUMULATIVE MEMBERSHIP DATA](#)

TOTAL FAMILY UNIT MEMBERS 2,845

FAMILY MEMBERS PAYING HALF DUES 1,468